

---

# MultiModem<sup>®</sup> Cell

## Wireless Modem



## User Guide

### MultiModem® Cell User Guide

#### Wireless Modem

MTCBA-E1, MTCBA-E1-U, MTCBA-C1, MTCBA-C1-U, MTCBA-G2, MTCBA-G2-U, MTCBA-H5, MTCBA-H5-U  
S000489G, Revision G

#### Copyright

This publication may not be reproduced, in whole or in part, without prior expressed written permission from Multi-Tech Systems, Inc. All rights reserved.

Copyright © 2013 by Multi-Tech Systems, Inc.

Multi-Tech Systems, Inc. makes no representation or warranties with respect to the contents hereof and specifically disclaims any implied warranties of merchantability or fitness for any particular purpose.

Furthermore, Multi-Tech Systems, Inc. reserves the right to revise this publication and to make changes from time to time in the content hereof without obligation of Multi-Tech Systems, Inc., to notify any person or organization of such revisions or changes. Check Multi-Tech's Web site for current versions of our product documentation.

#### Revision History

Revision	Date	Description
A	07/14/10	Initial release.
B	10/14/10	Updated operating temperatures, added weight, and added a note for the DSR signal on pin6 of the serial connector.
C	09/21/11	Removed references to product CD.
D	12/12/12	Added pacemaker statement, updated RoHS and other regulatory statements.
E	04/12/13	Added H5 models
F	04/29/13	Updated and standardized specifications table.
G	12/16/13	Added UL translations.

#### Trademarks and Logos

The Multi-Tech logo and MultiModem are registered trademarks of Multi-Tech Systems, Inc. Windows is a registered trademark of Microsoft in the U.S. and other countries. Other trademarks and trade names mentioned in this publication belong to their respective owners.

#### Contacting Multi-Tech Support

In order to better serve our customers, manage support requests and shorten resolution times, we have created the online web portal allowing you to submit questions regarding Multi-Tech products directly to our technical support team. Get answers to your most complex questions, ranging from implementation, troubleshooting, product configuration, firmware upgrades and much more.

To create an account and submit a Support Case on the Portal, visit <https://support.multitech.com>

#### Online Web Portal <https://support.multitech.com>

The Knowledge Base provides immediate answers to *your* questions and gives you access to support resolutions for all Multi-Tech products. Visit our support area on the website for other support services.

**Knowledge Base and Support Services** [www.multitech.com/support.go](http://www.multitech.com/support.go)

#### World Headquarters

Multi-Tech Systems, Inc.  
2205 Woodale Drive  
Mounds View, Minnesota 55112  
Phone: 763-785-3500 or 800-328-9717  
Fax: 763-785-9874

#### Technical Support

Business Hours: M-F, 9am to 5pm CST

#### Country

Europe, Middle East, Africa:  
U.S., Canada, all others:

#### By Email

support@multitech.co.uk  
support@multitech.com

#### By Phone

+(44) 118 959 7774  
(800) 972-2439 or (763) 717-5863

#### Warranty

To read the warranty statement for your product, please visit: <http://www.multitech.com/warranty.go>

# Contents

<b>Chapter 1 – Product Description and Specifications</b> .....	<b>5</b>
<b>Product Description</b> .....	<b>5</b>
<b>Related Documentation</b> .....	<b>6</b>
<b>Safety</b> .....	<b>6</b>
General Safety .....	6
RF Safety .....	6
Interference with Pacemakers and Other Medical Devices .....	7
Vehicle Safety .....	8
Maintenance of the Wireless MultiModem .....	8
Handling Precautions .....	8
<b>Front Panel</b> .....	<b>8</b>
LEDs .....	9
<b>Package Contents</b> .....	<b>10</b>
<b>Specifications</b> .....	<b>10</b>
MTCBA-E1 and MTCBA-E1-U .....	10
MTCBA-C1 and MTCBA-C1-U .....	11
MTCBA-G2 and MTCBA-G2-U .....	13
MTCBA-H5 and MTCBA-H5-U .....	14
<b>9-Pin Fem-D Sub Serial Connector</b> .....	<b>17</b>
<b>4-Position DIP Switch</b> .....	<b>17</b>
<b>Chapter 2 – Activating and Installing</b> .....	<b>18</b>
<b>Activating Your Wireless Account</b> .....	<b>18</b>
<b>Inserting the SIM Card into Holder (if required)</b> .....	<b>18</b>
<b>Connecting the Antenna, Serial or USB Cable, Power, Optional Power or Voice Cable</b> .....	<b>19</b>
<b>Optional Mounting</b> .....	<b>20</b>
Flat Surface Mounting .....	20
<b>Installing USB CDC-ACM Virtual COM Port</b> .....	<b>21</b>
Installing Virtual COM Port .....	21
Installing the Modem Driver .....	21
<b>Chapter 3 – Using Your Wireless Modem</b> .....	<b>26</b>
<b>Phone Numbers for the Wireless Modem</b> .....	<b>26</b>
<b>Examples of Useful AT Commands</b> .....	<b>26</b>
Verifying Signal Strength .....	26
Checking Network Registration and Roaming Status .....	26
Checking the Modem’s Identity .....	27
<b>Connecting to the Internet</b> .....	<b>27</b>
Connecting to a CDMA Network for Internet Access .....	27
Connecting to an EDGE/GPRS Network for Internet Access .....	27
Create Your Dial-Up Connection in Windows Vista and XP .....	29
Generic Dial-Up Method - Non-Windows .....	30
<b>Appendix A – Regulatory Compliance</b> .....	<b>31</b>
<b>FCC Part 15 Class B Statement</b> .....	<b>31</b>
<b>EMC, Safety, and R&amp;TTE Directive Compliance</b> .....	<b>31</b>

<b>International Modem Restrictions .....</b>	<b>31</b>
<b>EMC Requirements for Industry Canada.....</b>	<b>32</b>
<b>Waste Electrical and Electronic Equipment Statement .....</b>	<b>32</b>
WEEE Directive.....	32
Instructions for Disposal of WEEE by Users in the European Union .....	32
<b>REACH Statement.....</b>	<b>33</b>
<b>Restriction of the Use of Hazardous Substances (RoHS) .....</b>	<b>33</b>
<b>Information on HS/TS Substances According to Chinese Standards.....</b>	<b>34</b>
<b>Information on HS/TS Substances According to Chinese Standards (in Chinese) .....</b>	<b>35</b>
依照中国标准的有毒有害物质信息.....	35
<b>Appendix B - Cellular Information .....</b>	<b>36</b>
<b>Antenna System for Cellular Devices.....</b>	<b>36</b>
<b>FCC Requirements for the Antenna .....</b>	<b>36</b>
<b>Antenna Specifications.....</b>	<b>36</b>
CDMA RF Specifications .....	36
CDMA Antenna Requirements/Specifications .....	36
GSM/EGSM RF Specifications .....	37
GSM Antenna Requirements/Specifications.....	37
PTCRB Requirements for the Antenna.....	37
Antennas Available from Multi-Tech Systems, Inc. ....	38
<b>Appendix C – DC Power Cable.....</b>	<b>39</b>
DC Power Cable Dimensions .....	39

# Chapter 1 – Product Description and Specifications

## Product Description

The Multi-Tech MultiModem® Cell cellular modems are ready-to-deploy, standalone modems that provide wireless data communication and integrate seamlessly with virtually any application. The MultiModem Cell cellular modem is based on industry-standard open interface and uses Multi-Tech's Universal Socket design. The Cell modem is designed with a quad-band GSM/GPRS network, a dual-band CDMA2000 1xRTT network or a Penta-band HSPA+ network. The modem includes a broad range of interface options including RS232, RS422, or a USB interface. All MultiModem Cells can be desktop or panel mounted.



Model	Description
<b>MTCBA-E1</b>	Quad-band E-GPRS Class 12 performance and either RS232 serial interface or RS422 serial interface
<b>MTCBA-E1-U</b>	Quad-band E-GPRS Class 12 performance and USB connectivity
<b>MTCBA-C1</b>	Multi-band CDMA2000 1xRTT performance and either RS232 serial interface or RS422 serial interface
<b>MTCBA-C1-U</b>	Multi-band CDMA2000 1xRTT performance and USB connectivity
<b>MTCBA-G2</b>	Quad-band GPRS Class 10 performance and either RS232 serial interface or RS422 serial interface
<b>MTCBA-G2-U</b>	Quad-band GPRS Class 10 performance and USB connectivity
<b>MTCBA-H5</b>	HSPA+ and RS232 serial interface and RS-422 serial interface
<b>MTCBA-H5-U</b>	HSPA+ and USB connectivity

## Related Documentation

The following table describes additional documentation for each model.

Model	Additional Documentation
MultiModem MTCBA-E1 (EDGE)	You can configure the MultiModem MTCBA-E1 wireless router using the EDGE AT Commands. For more information refer to the Reference Guide for the MultiModem Wireless EDGE Modems, part number S000474x.
MultiModem MTCBA-G2 (GPRS)	You can configure the MultiModem MTCBA-G2 wireless modem using the GPRS AT Commands. For more information, refer to the Reference Guide for the MultiModem Wireless GPRS Modems, part number S000463x
MultiModem MTCBA-C1 (CDMA)	You can configure the MultiModem MTCBA-C1 wireless router using the CDMA-C1 AT Commands. For more information, refer to the Reference Guide for the MultiModem Wireless CDMA-C1 Modems, part number S000478x.
MultiModem MTCBA-H5 (HSPA+)	You can configure the MultiModem MTCBA-H5 wireless router using the HSPA+ AT Commands. These commands are documented in the Reference Guide part number S000528x.

## Safety

### General Safety

The modem is designed for and intended to be used in fixed and mobile applications. Fixed means the device is physically secured at one location and cannot be easily moved to another location. Mobile means the device is used in other than fixed locations.

### RF Safety

Due to the possibility of radio frequency (RF) interference, it is important that you follow any special regulations regarding the use of radio equipment. Follow the safety advice given below.

**Caution:** Maintain a separation distance of at least 20 cm (8 inches) between the transmitter’s antenna and the body of the user or nearby persons. The modem is not designed for or intended to be used in portable applications within 20 cm of the user’s body.

Check your local standards regarding safe distances, etc.

- Operating your device close to other electronic equipment may cause interference if the equipment is inadequately protected. Observe any warning signs and manufacturers’ recommendations.
- Different industries and businesses restrict the use of cellular devices. Respect restrictions on the use of radio equipment in fuel depots, chemical plants, or where blasting operations are in process. Follow restrictions for any environment where you operate the device.
- Do not place the antenna outdoors.
- Switch OFF your wireless device when in an aircraft. Using portable electronic devices in an aircraft may endanger aircraft operation, disrupt the cellular network, and is illegal. Failing to observe this restriction may lead to suspension or denial of cellular services to the offender, legal action, or both.
- Switch OFF your wireless device when around gasoline or diesel-fuel pumps and before filling your vehicle with fuel.

- Switch OFF your wireless device in hospitals and any other place where medical equipment may be in use.

## Sécurité RF

En raison de la possibilité d'interférences de radiofréquence (RF), il est important que vous suiviez une quelconque réglementation concernant l'utilisation du matériel radio. Suivez les conseils de sécurité ci-dessous.

**ATTENTION:** Maintenir une distance d'au moins 20 cm (8 po) entre l'antenne du récepteur et le corps de l'utilisateur ou à proximité de personnes. Le modem n'est pas conçu pour, ou destinés à être utilisés dans les applications portables, moins de 20 cm du corps de l'utilisateur.  
Vérifiez vos normes locales touchant les distances de sécurité, etc..

- Fonctionnement de votre appareil à proximité d'autres appareils électroniques peuvent causer des interférences si l'équipement est insuffisamment protégé. Respectez les panneaux d'avertissement et les recommandations du fabricant.
- Différentes industries et les entreprises limitent l'utilisation des appareils cellulaires. Respectez les règlements sur l'utilisation des équipements radio dans les dépôts de carburant, les usines chimiques, ou lorsque des opérations de dynamitage sont en cours. Suivez restrictions pour n'importe quel environnement où vous utilisez l'appareil.
- Ne pas placer l'antenne à l'extérieur.
- Éteignez votre appareil sans fil dans un avion. Utilisant des dispositifs électroniques portables dans un avion peut mettre en danger le fonctionnement de l'avion, peut perturber le réseau cellulaire, et est illégal. Le non-respect de cette restriction peut entraîner la suspension ou le refus des services cellulaires au contrevenant, une action en justice, ou les deux.
- Éteignez votre appareil sans fil lorsque autour de l'essence ou pompes diesel-carburant et avant de remplir votre véhicule avec du carburant.
- Éteignez votre appareil sans fil dans les hôpitaux et tout autre endroit où l'équipement médical peut être utilisé.

## Interference with Pacemakers and Other Medical Devices

### Potential interference

Radiofrequency energy (RF) from cellular devices can interact with some electronic devices. This is electromagnetic interference (EMI). The FDA helped develop a detailed test method to measure EMI of implanted cardiac pacemakers and defibrillators from cellular devices. This test method is part of the Association for the Advancement of Medical Instrumentation (AAMI) standard. This standard allows manufacturers to ensure that cardiac pacemakers and defibrillators are safe from cellular device EMI.

The FDA continues to monitor cellular devices for interactions with other medical devices. If harmful interference occurs, the FDA will assess the interference and work to resolve the problem.

### Precautions for pacemaker wearers

If EMI occurs, it could affect a pacemaker in one of three ways:

- Stop the pacemaker from delivering the stimulating pulses that regulate the heart's rhythm.
- Cause the pacemaker to deliver the pulses irregularly.
- Cause the pacemaker to ignore the heart's own rhythm and deliver pulses at a fixed rate.

Based on current research, cellular devices do not pose a significant health problem for most pacemaker wearers. However, people with pacemakers may want to take simple precautions to be sure that their device doesn't cause a problem.

- Keep the device on the opposite the side of the body from the pacemaker to add extra distance between the pacemaker and the device.
- Avoid placing a turned-on device next to the pacemaker (for example, don't carry the device in a shirt or jacket pocket directly over the pacemaker).

## Vehicle Safety

- Do not use this device while driving.
- Respect national regulations on the use of cellular telephones in vehicles.
- If incorrectly installed in a vehicle, operating the wireless device could interfere with the vehicle's electronics. To avoid such problems, use qualified personnel to install the device. **The installer must verify that vehicle electronics are protected from interference.**
- Using an alert device to operate a vehicle's lights or horn is not permitted on public roads.

## Maintenance of the Wireless MultiModem

The suggestions that follow can help help you maintain your device.

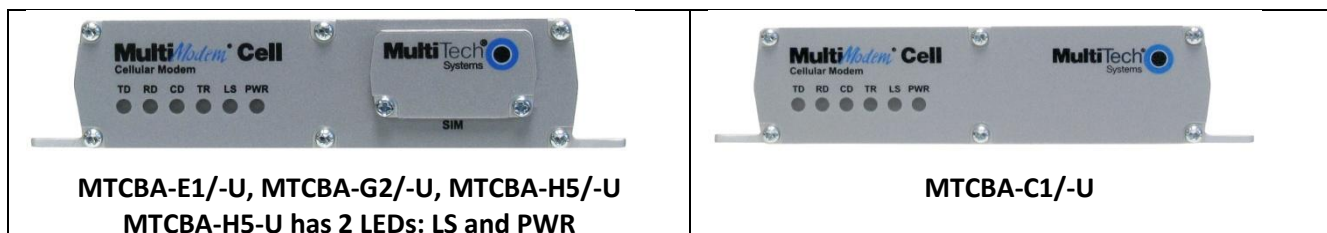
- Do not expose the MultiModem to any extreme environment where the temperature or humidity is high.
- Do not attempt to disassemble the MultiModem. There are no user serviceable parts inside.
- Do not expose the MultiModem to water, rain, or spilled beverages. It is not waterproof.
- Do not abuse your MultiModem by dropping, knocking, or violently shaking it. Rough handling can damage it.
- Do not place the MultiModem alongside computer discs, credit or travel cards, or other magnetic media. The information contained on discs or cards may be affected by the phone.
- Using accessories that Multi-Tech has not authorized or that are no compliant with Multi-Tech's accessory specifications may invalidate the MultiModem warranty.

## Handling Precautions

Handle all electronic devices with certain precautions to avoid damage due to the static charge accumulation. Although input protection circuitry has been incorporated into the devices to minimize the effect of this static build up, proper precautions should be taken to avoid exposure to electrostatic discharge during handling and mounting.

## Front Panel

The front panel has LEDs that display modem activity—such as transmit and receive data, carrier detection, link status, terminal ready indicating connection to the pc, and the power indicator. The SIM door on the right side provides access to the SIM card holder for those configurations.





## LEDs

LED Indicators				
<b>TD</b>	<b>Transmit Data:</b> Lit when modem is transmitting data.			
<b>RD</b>	<b>Receive Data:</b> Lit when modem is receiving data.			
<b>CD</b>	<b>Carrier Detect:</b> Lit when data connection has been established.			
<b>TR</b>	<b>Terminal Ready:</b> Lit when modem is transmitting data.			
<b>LS</b>	Link Status Dependent on Model			
	-E1 version* (AT^SSYNC=1)	-G2 version	-C1 version	-H5 versions
	<p><b>Permanently off.</b> ME is in one of the following modes: Power Down mode, Airplane mode Non-Cyclic Sleep mode with no temporary wake-up event in progress.</p> <p><b>600 ms on/600 ms off</b></p> <p>Limited Network Service: No SIM card inserted or no PIN entered, or network search in progress or ongoing user authentication, or network login in progress.</p> <p><b>75 ms on/3 sec off</b></p> <p>Idle mode: The mobile is registered to the GSM network (monitoring control channels and user interactions). No call is in progress.</p> <p><b>75 ms on/ 75 ms off/75 ms on/3 sec off</b></p> <p>One or more GPRS contexts activated.</p> <p><b>500 ms on/ 25 ms off</b></p> <p>Packet switched data transfer in progress.</p> <p><b>Permanently on</b></p> <p><u>CSD call</u> – Connected to remote party.</p>	<p><b>Continuous “on” state</b> indicates that the wireless modem is not registered on the network.</p> <p><b>Flashing states:</b></p> <p><b>200 ms on / 2 sec off</b></p> <p>Indicates registration on network.</p> <p><b>200 ms on / 600 ms off</b></p> <p>Indicates it is registered on a network and communication is in progress.</p> <p><b>Off state.</b> Modem is off (not ready) or in download mode.</p>	<p><b>Continuous “on” state</b> indicates that the wireless modem is not registered on the network.</p> <p><b>Flashing states:</b></p> <p><b>200 ms on / 2 sec off</b></p> <p>Indicates registration on network.</p> <p><b>200 ms on / 600 ms off</b></p> <p>Indicates it is registered on a network and communication is in progress.</p> <p><b>Off state.</b> Modem is off (not ready) or in download mode.</p>	<p>When lit, indicates the radio module has power.</p>
<b>PWR</b>	Indicates presence of DC power when lit.			

**Note:** The Link Status (LS) LED requires an AT^SSYNC=1 command on power up or Reset for the LED to perform as described. For other EDGE AT commands, refer to the EDGE (E1) AT Command Reference Guide.

## Package Contents

**Note:** Your wireless provider supplies the SIM card (not needed for –C1 versions).

Unbundled Package with No Accessories	Bundled Package With Accessories
1 modem  <b>Note:</b> You must supply mounting screws, AC or DC power supply, and an antenna.	1 modem 1 antenna 1 RS232 or USB cable 1 power supply with serial versions <b>Note:</b> You must supply mounting screws.

## Specifications

### MTCBA-E1 and MTCBA-E1-U

Category	Description
<b>General</b>	
Performance	Edge: E-GPRS Class 12 GPRS: Multislot Class 12
Frequency Bands	Quad Band 850/900/1800/1900 MHz
<b>Speed</b>	
Packet Data <sup>1</sup>	EDGE: E-GPRS up to 240 Kbps, coding scheme MCS1-9, mobile station Class B, LLC layer, 4 time slots GPRS: Full PBCCH support, coding scheme 1-4, mobile station Class B
Circuit Switched Data	Up to 14.4 Kbps non-transparent
<b>SMS</b>	
SMS	Text and PDU, Point-to-Point, Cell broadcast
<b>Connectors</b>	
Power Connector	2.5 mm miniature (screw-on)
RF Antenna Connector	50 ohm SMA (female connector)
RS232 Connector	DE9
SIM Connector	Standard 1.8 and 3 V SIM receptacle
USB Connector	Type B
<b>Power Requirements</b>	
Voltage	9 V to 32 V DC (serial only) 5.0 V (USB input voltage supplied by USB connector)
<b>Physical Description</b>	
Dimensions (L x W x H)	2.35 in x 4.11 in x 1.07 in 8.6 cm x 12.5 cm x 2.7 cm
Weight (Device only)	0.4 lbs 0.175 Kg
<b>Environment</b>	
Operating Temperature <sup>2</sup> (verified tested temp)	-31° to 167° F -35° to 75° C
Storage Temperature	-40° to 185° F -40° to 85° C
Humidity	Relative humidity 20% to 90% non condensing
<b>Certifications, Compliance</b>	
EMC Compliance	FCC Part 15 EN55022

Category	Description
	EN55024
Radio Compliance	FCC Part 22, 24 RSS132, 133 EN301 489-1 EN301 489-7 EN301 511 AS/ACIF S042.1, S042.3
Safety Compliance	UL/cUL 60950-1 2nd Ed IEC60950-1 2nd Ed am.1
Network Compliance	PTCRB

<sup>1</sup>Actual performance speeds may be affected by a variety of attributes such as cell tower distance, data loads, position of the sun, wind speeds, packet sizes, etc.

<sup>2</sup> UL Listed @ 40°C, limited by power supply. UL Certification does not apply or extend to an ambient above 40°C and has not been evaluated by UL for ambient greater than 40°C. "UL has evaluated this device for use in ordinary locations only. Installation in a vehicle or other outdoor locations has not been evaluated by UL. UL Certification does not apply or extend to use in vehicles or outdoor applications or in ambient above 40°C."

Répertorié UL à 40° C, limitée par la puissance d'alimentation. Certification UL ne s'appliquent ni s'étendent à l'une température ambiante supérieure à 40° C et n'a pas été évalué par UL pour ambiante supérieure à 40° C. «UL a évalué cet appareil pour une utilisation dans des endroits ordinaires seulement. Installation dans un véhicule ou d'autres emplacements en plein air n'a pas été évaluée par UL. La certification UL ne s'applique pas ou s'étendent à utiliser dans des véhicules ou les applications en extérieur ou dans ambiante dépasse 40 ° C.»

## MTCBA-C1 and MTCBA-C1-U

Category	Description
<b>General</b>	
Performance	CDMA2000 1xRTT
Frequency Bands	Dual band 800/1900 MHz
<b>Speed</b>	
Packet Data <sup>1</sup>	Up to 153.6 Kbps forward and reverse
Circuit Switched Data	IS-95A, IS-95B up to 14.4K bps forward and reverse
<b>SMS</b>	
SMS	Text & PDU, Point-to-Point, Cell broadcast
<b>Connectors</b>	
Power Connector	2.5mm miniature (screw-on)
RF Antenna Connector	50 ohm SMA (female connector)
RS232 Connector	DE9
USB Connector	Type B
<b>Power Requirements</b>	
Voltage	9 V to 32 V DC (serial only) 5.0 V (USB input voltage supplied by USB connector)
<b>Physical Description</b>	
Dimensions (L x W x H)	2.35 in x 4.11 in x 1.07 in 8.6 cm x 12.5 cm x 2.7 cm
Weight (Device only)	0.4 lbs 0.175 Kg
<b>Environment</b>	

Category	Description
Operating Temperature <sup>2</sup> (verified tested temp)	-40° to 185° F -40° to 85° C
Storage Temperature	-40°to 185° F -40° to 85° C
Humidity	Relative humidity 20%-90% noncondensing
<b>Certifications, Compliance</b>	
EMC Compliance	FCC Part 15
Radio Compliance	FCC Part 22, 24 RSS132, 133
Safety Compliance	UL/cUL 60950-1 2nd Ed IEC60950-1 2nd Ed am.1
Network Compliance	PTCRB

<sup>1</sup>Actual performance speeds may be affected by a variety of attributes such as cell tower distance, data loads, position of the sun, wind speeds, packet sizes, etc.

<sup>2</sup> UL Listed @ 40°C, limited by power supply. UL Certification does not apply or extend to an ambient above 40°C and has not been evaluated by UL for ambient greater than 40°C. "UL has evaluated this device for use in ordinary locations only. Installation in a vehicle or other outdoor locations has not been evaluated by UL. UL Certification does not apply or extend to use in vehicles or outdoor applications or in ambient above 40°C."

Répertorié UL à 40° C, limitée par la puissance d'alimentation. Certification UL ne s'appliquent ni s'étendre à l'une température ambiante supérieure à 40° C et n'a pas été évalué par UL pour ambiante supérieure à 40° C. «UL a évalué cet appareil pour une utilisation dans des endroits ordinaires seulement. Installation dans un véhicule ou d'autres emplacements en plein air n'a pas été évaluée par UL. La certification UL ne s'applique pas ou s'étendre à utiliser dans des véhicules ou les applications en extérieur ou dans ambiante dépasse 40 ° C.»

## MTCBA-G2 and MTCBA-G2-U

Category	Description
<b>General</b>	
Performance	GPRS: Class 10
Frequency Bands	Quad Band 850/900/1800/1900 MHz
<b>Speed</b>	
Packet Data <sup>1</sup>	Up to 85.6 Kbps, coding schemes CS1 to CS4
Circuit Switched Data	Up to 14.4 Kbps non-transparent
<b>SMS</b>	
SMS	Text & PDU, Point-to-Point, Cell broadcast
<b>Connectors</b>	
Power Connector	2.5mm miniature (screw-on)
RF Antenna Connector	50 ohm SMA (female connector)
RS232 Connector	DE9
SIM Connector	Standard 1.8 and 3 V SIM receptacle
USB Connector	Type B
<b>Power Requirements</b>	
Voltage	9 V to 32 V DC (serial only) 5.0 V (USB input voltage supplied by USB connector)
<b>Physical Description</b>	
Dimensions (L x W x H)	2.35 in x 4.11 in x 1.07 in 8.6 cm x 12.5 cm x 2.7 cm
Weight (Device only)	0.4 lbs 0.175 Kg
<b>Environment</b>	
Operating Temperature <sup>2</sup> (verified tested temp)	-40° to 185° F -40° to 85° C
Storage Temperature	-40° to 185° F -40° to 85° C
Humidity	Relative humidity 20%-90% noncondensing
<b>Certifications, Compliance</b>	
EMC Compliance	FCC Part 15 EN55022 EN55024

Category	Description
Radio Compliance	FCC Part 22, 24 RSS132, 133 EN301 489-1 EN301 489-7 EN301 511 AS/ACIF S042.1, S042.3
Safety Compliance	UL/cUL 60950-1 2nd Ed IEC60950-1 2nd Ed am.1
Network Compliance	PTCRB, GCF

<sup>1</sup>Actual performance speeds may be affected by a variety of attributes such as cell tower distance, data loads, position of the sun, wind speeds, packet sizes, etc.

<sup>2</sup> UL Listed @ 40°C, limited by power supply. UL Certification does not apply or extend to an ambient above 40°C and has not been evaluated by UL for ambient greater than 40°C. "UL has evaluated this device for use in ordinary locations only. Installation in a vehicle or other outdoor locations has not been evaluated by UL. UL Certification does not apply or extend to use in vehicles or outdoor applications or in ambient above 40°C."

Répertorié UL à 40° C, limitée par la puissance d'alimentation. Certification UL ne s'appliquent ni s'étendent à l'une température ambiante supérieure à 40° C et n'a pas été évalué par UL pour ambiante supérieure à 40° C. «UL a évalué cet appareil pour une utilisation dans des endroits ordinaires seulement. Installation dans un véhicule ou d'autres emplacements en plein air n'a pas été évaluée par UL. La certification UL ne s'applique pas ou s'étend à utiliser dans des véhicules ou les applications en extérieur ou dans ambiante dépasse 40 ° C.»

## MTCBA-H5 and MTCBA-H5-U

Category	Description
<b>General</b>	
Performance	HSPA+
Frequency Bands	Penta band 850/900/1700/1900/2100 MHz
<b>Speed</b>	
Packet Data <sup>1</sup>	HSDPA data service of up to 21.0 Mbps HSUPA data service of up to 5.76 Mbps
<b>SMS</b>	
SMS	Text & PDU, Point-to-Point, Cell broadcast
<b>Connectors</b>	
Power Connector	2.5mm miniature (screw-on)
RF Antenna Connector	50 ohm SMA (female connector)
RS232 Connector	DE9
SIM Connector	Standard 1.8 and 3 V SIM receptacle
USB Connector	Type B
<b>Power Requirements</b>	
Voltage	9 V to 32 V DC (serial only) 5.0 V (USB input voltage supplied by USB connector)
<b>Physical Description</b>	
Dimensions (L x W x H)	2.35 in x 4.11 in x 1.07 in 8.6 cm x 12.5 cm x 2.7 cm
Weight (Device only)	0.4 lbs 0.175 Kg
<b>Environment</b>	

Category	Description
Operating Temperature <sup>2</sup> (verified tested temp)	-22°to 167° F -30° to 75° C
Storage Temperature	-40°to 185° F -40° to 85° C
Humidity	Relative humidity 20%-90% noncondensing
<b>Certifications, Compliance</b>	
EMC Compliance	FCC Part 15 EN55022 EN55024
Radio Compliance	FCC Part 22, 24 RSS132, 133 EN301 489-1 EN301 489-7 EN301 489-24
Safety Compliance	UL/cUL 60950-1 2nd Ed IEC60950-1 2nd Ed am.1
Network Compliance	PTCRB, GCF

<sup>1</sup>Actual performance speeds may be affected by a variety of attributes such as cell tower distance, data loads, position of the sun, wind speeds, packet sizes, etc.

<sup>2</sup> UL Listed @ 40°C, limited by power supply. UL Certification does not apply or extend to an ambient above 40°C and has not been evaluated by UL for ambient greater than 40°C. "UL has evaluated this device for use in ordinary locations only. Installation in a vehicle or other outdoor locations has not been evaluated by UL. UL Certification does not apply or extend to use in vehicles or outdoor applications or in ambient above 40°C."

Répertorié UL à 40° C, limitée par la puissance d'alimentation. Certification UL ne s'appliquent ni s'étendre à l'une température ambiante supérieure à 40° C et n'a pas été évalué par UL pour ambiante supérieure à 40° C. «UL a évalué cet appareil pour une utilisation dans des endroits ordinaires seulement. Installation dans un véhicule ou d'autres emplacements en plein air n'a pas été évaluée par UL. La certification UL ne s'applique pas ou s'étendre à utiliser dans des véhicules ou les applications en extérieur ou dans ambiante dépasse 40 ° C.»

## Power MTCBA-H5

### GSM

	Sleep	Typical	Maximum	Peak TX	Peak Rst (Inrush Current)
<b>9 volts</b>					
	0.032A, 0.296W	0.062A, 0.57W	0.155A, 1.43W	1.24A	1.60A
<b>20 volts</b>					
	0.020A, 0.400W	0.034A, 0.68W	0.076A, 1.52W	0.555A	1.645A
<b>32 volts</b>					
	0.014A, 0.448W	0.025A, 1.25W	0.051A, 1.63W	0.363A	1.48A

### HSDPA

	Sleep	Typical	Maximum	Peak TX	Peak Rst (Inrush Current)
<b>9 volts</b>					

	0.032A, 0.296W	0.119A, 1.10W	0.261A, 2.39W	0.332A	1.60A
<b>20 volts</b>					
	0.020A, 0.400W	0.059A, 1.18W	0.128A, 2.56W	0.196A	1.645A
<b>32 volts</b>					
	0.014A, 0.448W	0.039A, 1.25W	0.085A, 2.72W	0.152A	1.480A

## Power MTCBA-H5-U

### GSM

	Typical	Maximum	Peak TX	Peak Rst (Inrush Current)
<b>5 volts</b>	0.088A, 0.44W	0.250A, 1.21W	0.62A	1.25A

### HSDPA

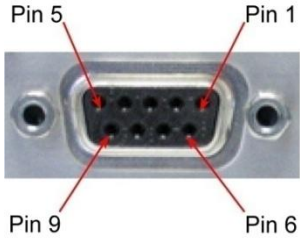
	Typical	Maximum	Peak TX	Peak Rst (Inrush Current)
<b>5 volts</b>	0.187A, 0.91W	0.478A, 2.22W	0.62A	1.25A

Multi-Tech Systems, Inc recommends that the customer incorporate a 10% buffer into their power source when determining product load.



## 9-Pin Fem-D Sub Serial Connector

The following table explains the pin functions.

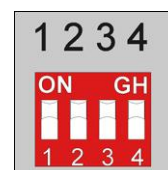
DE9 Pin Assignment				Female Connector
DE9 Pins	RS232 Signals DCE	RS422 Full Duplex Signals	Signal Direction	
Pin 1	Data Carrier Detected (DCD)	RxD-	Out	
Pin 2	RXD	RxD+	Out	
Pin 3	TXD	TxD+	In	
Pin 4	Data Terminal Ready (DTR)	TxD-	In	
Pin 5	Ground	Ground	N/A	
Pin 6	Data Set Ready (DSR)	Ready To Send - (RTS-)	Out – RS232 In – RS422	
Pin 7	Ready To Send (RTS)	Ready To Send + (RTS+)	In	
Pin 8	Clear To Send (CTS)	Clear To Send + (CTS+)	Out	
Pin 9	Ring Indicator (RI)	Clear To Send - (CTS-)	Out	

**Note:** The DSR signal on pin 6 is always asserted by the modem.

## 4-Position DIP Switch

Note: Not supported on H5 models.

Switch Position	Up/On Down/Off	Description
Position 1	Off	DTR Reset Disabled Not supported on H5 models
Position 1	On	DTR Reset Enabled Not supported on H5 models
Positions 2-4		<b>Only valid for serial builds</b>
Position 2	Off	No TXD Termination
Position 2	On	TXD Diff Pair Terminated
Position 3	Off	No RTS Termination
Position 3	On	RTS Diff Pair Terminated
Position 4	Off	RS232 Mode
Position 4	On	RS422 Mode



**Note:** Positions 2 and 3 should only be used in RS422 Mode. Enabling TXD/RTS termination may be required to avoid errors at high bit rates or long cable lengths. Multi-Tech Systems tested the cable up to 1,000 feet, but the maximum may be more with termination enabled and lower data rates.

---

## Chapter 2 – Activating and Installing

### Activating Your Wireless Account

Refer to the wireless account Activation Notices included with your unit. Choose the notice for your wireless network provider and follow the directions to activate your account.

#### Phone Numbers for the Wireless Modem

Every wireless modem has a unique phone number. Your wireless service provider may give you this number or it might be included on the SIM card. Wireless provider implementations may vary.

### Inserting the SIM Card into Holder (if required)

The MultiModem requires the power supply connection to begin operation. It also requires a SIM card (Subscriber Identity Module) to operate on a GSM network. To install the SIM, do the following:

1. Using a small Phillips screwdriver, remove the two SIM door screws and remove the SIM door.

**Note:** When changing a SIM, ensure that power is removed from the unit.



2. Insert the SIM card into the card holder. The above graphic illustrates the correct SIM card orientation.
3. Verify that the SIM card fits into the holder properly and then replace the cover.

## Connecting the Antenna, Serial or USB Cable, Power, Optional Power or Voice Cable

MTCBA-H5 models do not support voice. The Voice jack is not included on MTCBA-H5 models.



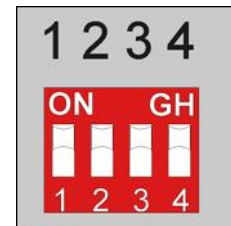
1. Connect a suitable antenna to the ANT connector on the right side of the unit. See antenna specifications in Chapter 1.
2. If you are connecting to a serial interface, connect a serial cable to the RS232 connector on the back of the unit and connect the other end of the serial cable to the serial port on your PC.

If you are connecting to an USB interface, connect an USB cable to the USB connector on the back of the unit and the other end to the USB port on your PC.

3. Set the 4-position DIP Switch on the back of the unit to the configuration of your unit.

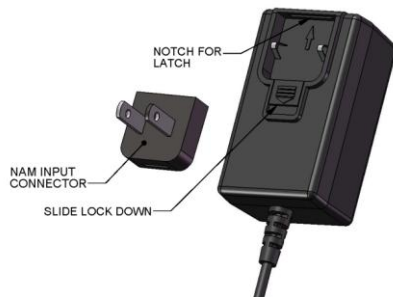
**Note:** DIP switch not supported on H5 models.

Switch Position	Up/On Down/Off	Description
Position 1	Off	DTR Reset Disabled
Position 1	On	DTR Reset Enabled
Positions 2-4		<b>Only valid for serial builds</b>
Position 2	Off	No TXD Termination
Position 2	On	TXD Diff Pair Terminated
Position 3	Off	No RTS Termination
Position 3	On	RTS Diff Pair Terminated
Position 4	Off	RS232 Mode
Position 4	On	RS422 Mode



**Note:** Positions 2 and 3 should only be used in RS422 Mode. Enabling TXD/RTS termination may be required to avoid errors at high bit rates or long cable lengths. The cable is tested up to 1,000 feet but the maximum may be more with termination enable and lower data rates.

4. If you are connecting a hand set to the unit for voice communication, connect an RJ11 cable from the hand set to the VOICE connector on the back of the unit. To adjust the volume of the hand set, refer to the appropriate AT Command Reference Guide.
5. Depending on the power source, connect either the power supply module with the appropriate blade or the optional DC power cable. If you are using the power supply module, remove the protective shipping cover. Attach the appropriate interchangeable blade piece to the power supply module.



Screw-on the power lead from the power supply module to the power connection on the modem. Now, plug the power supply into your power source.

### For Optional Direct DC Power

- Screw-on the DC power cable to the power connector on the modem.
- Then attach the two wires at the other end of the DC power cable to a DC fuse/terminal block.
- Connect the red wire to the "+" (positive) terminal and the black wire to the "-" (negative) terminal. Be sure the GND connection is correct.

**Note:** The device provides over-voltage protection. For additional protection, you may want to add additional filtering to the DC input.

**Note:** For automotive application: according to the type of application, you can use permanent "+" or key-switched "+" source. Connect the power supply to its source (for example, in a mobile situation, to the vehicle's DC fuse/terminal block).

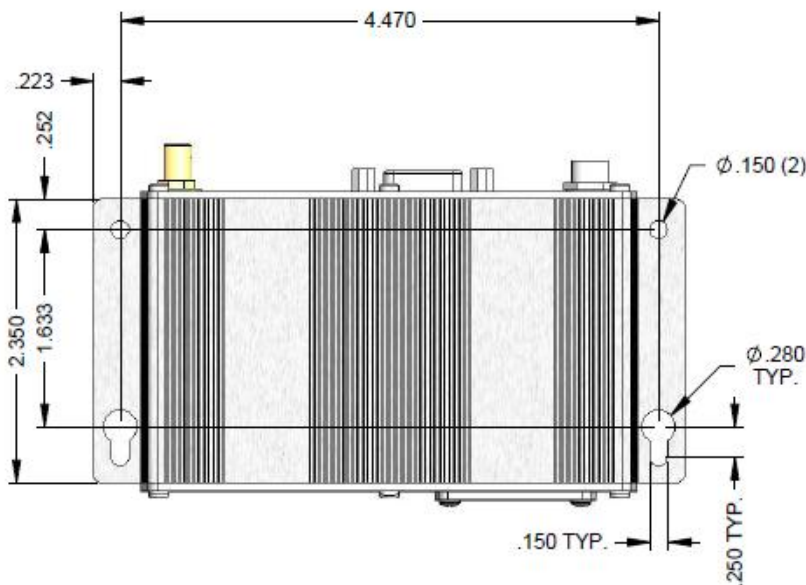
## Optional Mounting

The Cell can be panel mounted with screws spaced according to the measurement shown.

### Flat Surface Mounting

The Cell can be panel mounted with screws spaced according to the measurements showing.

**Note:** Use either #4 or #6 pan head screws for all four mount locations.



## Installing USB CDC-ACM Virtual COM Port

**Note:** To install the USB driver for the MTCBA-H5-U model, download the guide USB Driver Installation Guide, part number S000553. Follow the instructions in that guide to install the USB driver. Windows XP (SP3 or greater), VISTA, 2003 Server, Windows 7 (32-bit or 64-bit), Linux (Kernel 2.6.xx using CDC-ACM module) are supported.

For Linux, a 2.6.28 kernel or greater is required. The standard CDC-ACM driver works.

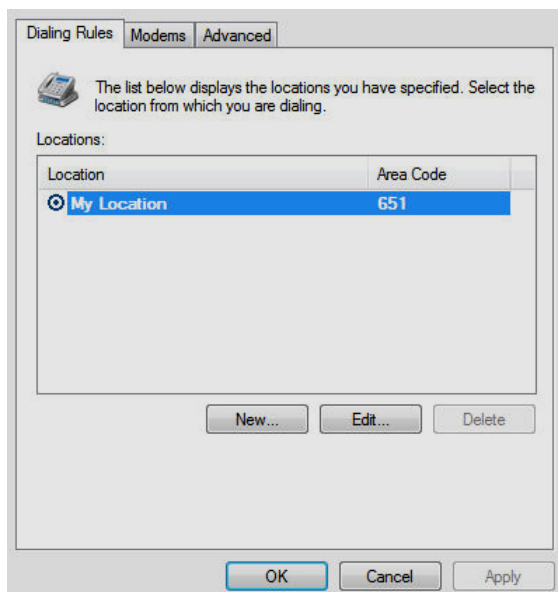
**Note:** Some versions of Windows have an issue with their CDC-ACM driver (Usbser.sys). If you are having connection problems (file download, web pages not loading) your version of Usbser.sys must be updated. Microsoft article 925681 documents this issue and provides a fix. After installing the virtual com port, the correct modem driver may be installed to the com port (for the USB versions, make sure the USB port of the Cell is connected with a SIM card before the modem driver is installed).

## Installing Virtual COM Port

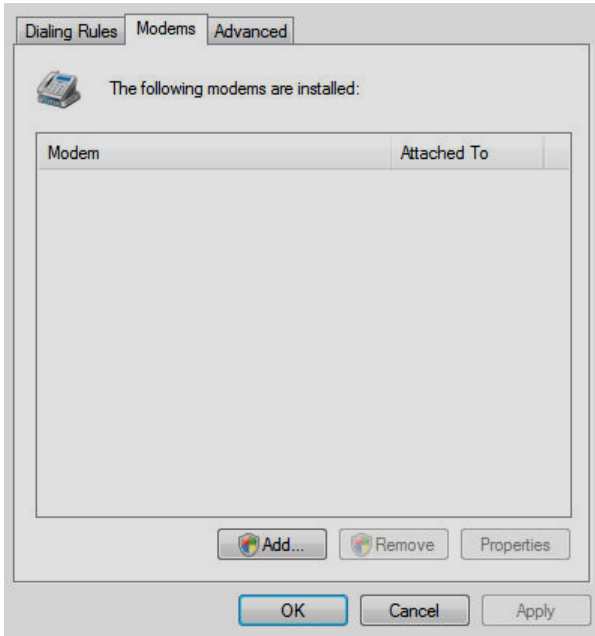
1. Download the driver for your modem from the Multi-Tech website.
2. For USB versions of the Cell, ensure that the USB cable is connected to your PC.
3. For GSM versions of the Cell, ensure that the SIM card is installed prior to powering up.
4. If any Windows Install Wizard pops up, close or cancel the wizard.
5. Windows may pop-up a User Account Control window. Select the YES button to continue with the driver installation.
6. Click **Next** to start the driver pre-installation.
7. An information page opens, then the process completes. Click **Finish**.
8. Install the modem driver as described in the section that follows.

## Installing the Modem Driver

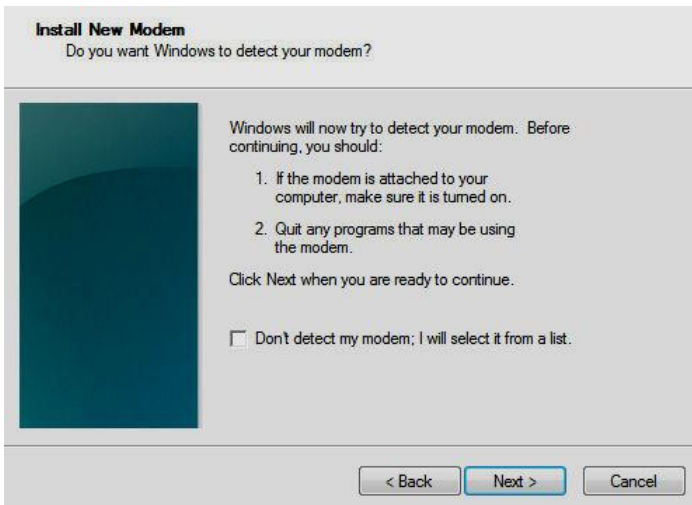
1. From the Windows Start button, select **Control Panel**.
2. The **Control Panel** opens. Double-click **Phone and Modem Options**. Then click on the **Modems** tab.



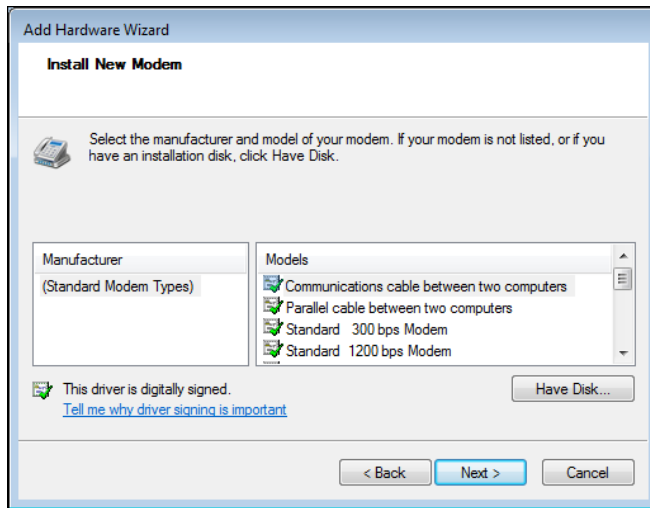
3. When the **Phone and Modem Options** window appears, click **Add**.



4. On the Install New Modem window, click **Don't detect my modem, I will select it from a list**. Then click **Next**.

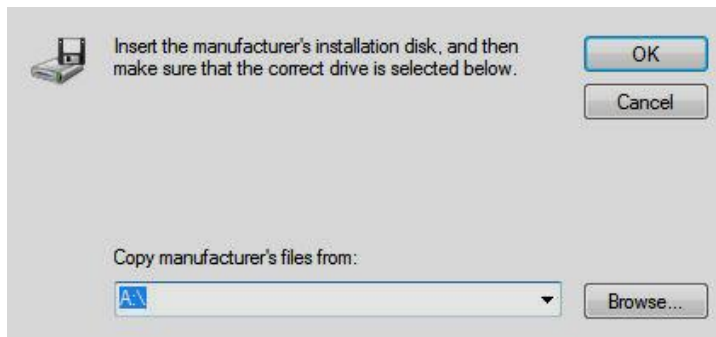


5. On the **Install New Modem** screen, click the **Have Disk** button to browse for the driver file that you downloaded from the Multi-Tech website.

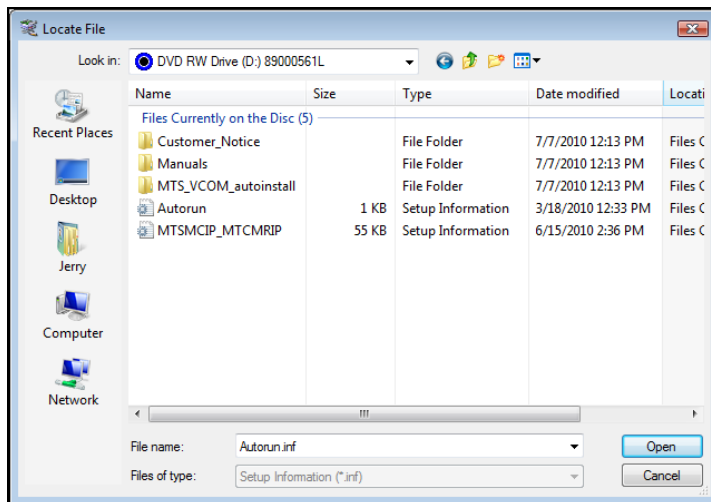


Click **Next**.

6. Browse to the location where you downloaded the driver.

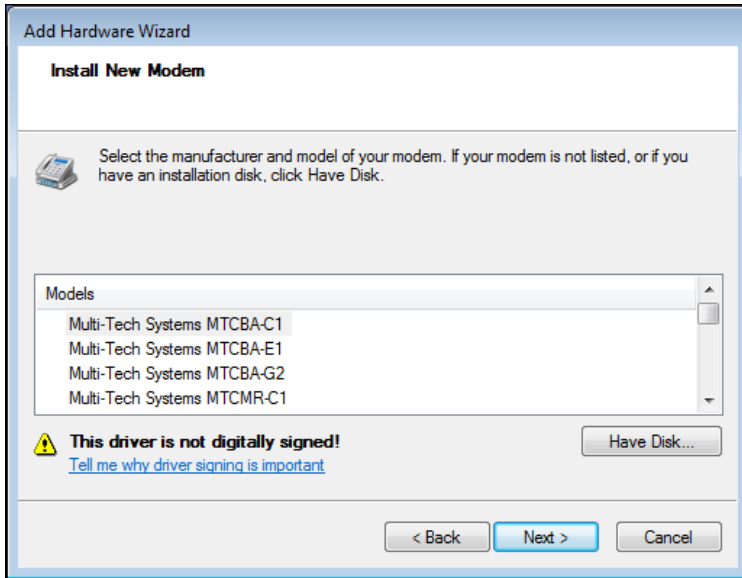


7. Select the MTSMCIP\_MTCMRIP.INF file.



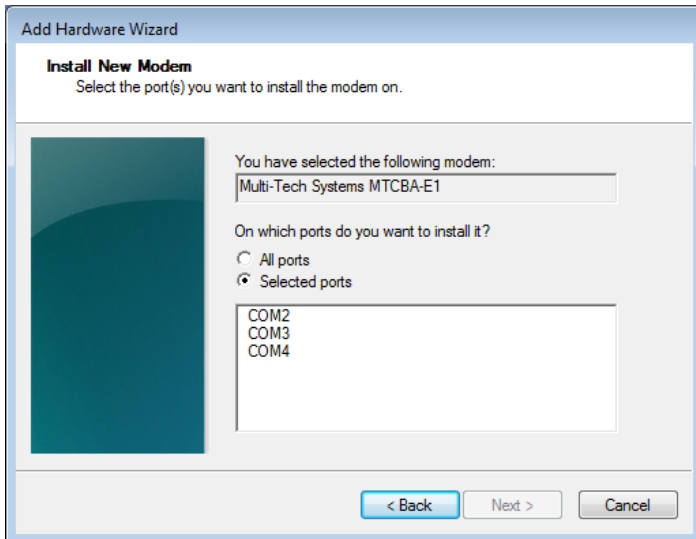
Then click **OK**.

8. In the Models window, scroll down the list of Models and select the model that is applicable to your modem.



Once you have selected your model, click **Next**.

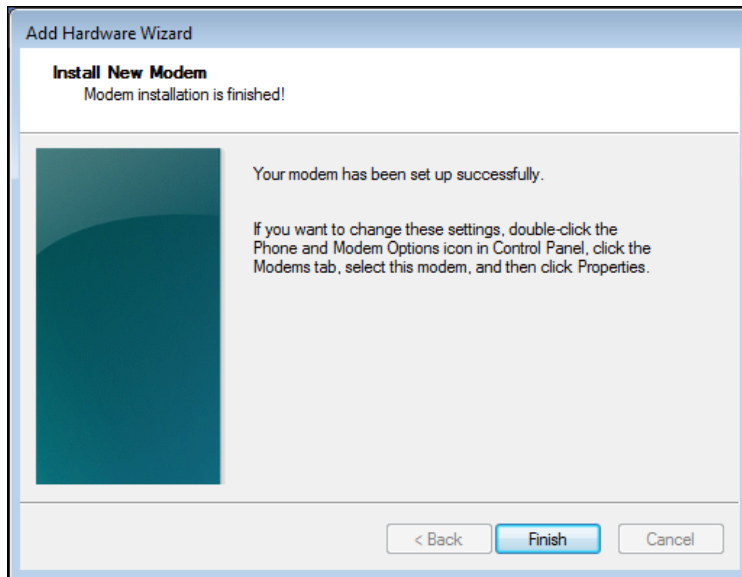
9. Choose the com port to which the MultiModem is connected.



If you know exactly which port your modem is on, click on that port; otherwise, go to **Device Manager > Ports (COM & LPT)** to verify which port the **MultiModem Cell MTCBA-X-U** is installed on. Click **Next**.

10. To finish the install, click **Finish**.





You have now successfully installed the MultiModem driver to your PC.

### Verifying That Your Modem is Installed Successfully

1. After you have successfully installed the MultiModem driver as stated above, you should be brought back to the Phone and Modems Options screen. Make sure that the modem is now listed under the columns **Modem** and **Attached To** (the correct com port).
2. Highlight the modem and then click on **Properties**.
3. A **Properties** page opens for the Multi-Tech modem. Click the **Diagnostics** tab.
4. In the middle of the screen, click **Query Modem**. Windows tries to query the Multi-Tech modem. If this process passes, the second box on this page displays the columns **Command** and **Response**.  
**Note:** To make sure that the modem is correctly being queried, look at the LED lights of the modem after you click **Query Modem**. The TR light comes on and the TD and RD lights flicker.
5. If this process passes, then the modem is properly installed and ready for use. Click **OK** to close the modem Properties window. Then click on **OK** to close the Phone and Modem Options window.

# Chapter 3 – Using Your Wireless Modem

## Phone Numbers for the Wireless Modem

- Every wireless modem has a unique phone number.
- The phone number may simply be given to you by your wireless service provider or it may be on the SIM card or both. Wireless provider implementations may vary.

## Examples of Useful AT Commands

AT commands can be used to operate, configure, and query your modem. AT commands for the MultiModem Cells are published in separate Reference Guides posted on the Multi-Tech web site.

To verify signal strength and roaming status—two of the examples in this section—you must use a terminal application such as HyperTerminal. To open this program in Windows Vista or XP, go to **Start > All Programs > Accessories > Communications > HyperTerminal**. You can open HyperTerminal in other Windows operating systems in a similar manner.

## Verifying Signal Strength

Using **HyperTerminal**, type **AT+CSQ**

The modem responds with the received signal strength (rssi).

The modem responds with the received signal strength (rssi) and the channel bit error rate (ber).

RSSI ranges from 0 to 31.

Signal Strength Verification – RSSI	
AT+CSQ xx Values	Signal Strength
0 - 10	Weak or Insufficient
11 - 20	Average
21 – 31	Exceptional
99	No signal

BER ranges from 0 to 7 (Seven is the highest error rate).

## Checking Network Registration and Roaming Status

In this procedure, you verify that the MultiModem has been registered on the wireless network. Using **HyperTerminal**, type **AT+CREG?**

The modem responds in one of the following ways:

Network Registration Verification	
Value	Network Registration Status
0,0	The modem is not registered on any network
0,1	The modem is registered on the home network
0,5	The modem is registered on a network and it is roaming

**Note:** If the modem indicates that it is not registered, verify the signal strength to determine if the problem is the strength of the received signal.

## Checking the Modem's Identity

Use the **ATI** command. This command uses the capital letter I after **AT**)

1. Type **ATI0** (Note: The command ends in a zero)

The manufacturing data displays. For example: Wavecom Modem Multiband G850 1900

2. Type **ATI3**

The software version displays. For example: 651\_09gg...

3. Type **ATI6**

Displays modem data features. For example: data rates, data modes, fax classes.

## Connecting to the Internet

Internet access can be setup in Windows Dial-Up Networking (DUN) of the computer that the MultiModem Cell is serving. For a GPRS network, you have to create an Access Point Name in the Phone and Modem Options dialog in Windows Control Panel and then create your Windows Dial-Up Connection (DUN).

## Connecting to a CDMA Network for Internet Access

Once you have activated your wireless account, you can establish your Internet connection through a Windows dial-up session. Setup procedures vary according to the type of wireless service provider used.

### Requirements

- One CDMA capable MultiModem Cell modem
- The modem must be getting a proper signal and be showing a network registration through the wireless provider's network
- A PC running Windows 7, Vista or XP with the Multi-Tech drivers installed for your particular model

The following instructions are for Windows Vista or XP. Every PC may have slight differences which may cause the instructions to be different. Use these instructions as a guide to help you understand what is required to set up an Internet connection through your wireless service provider for all operating systems.

## Connecting to an EDGE/GPRS Network for Internet Access

After you have inserted the SIM card and all other setup steps are complete, you can establish an Internet connection through a Windows dial-up session.

### Requirements

- One EDGE capable MultiModem Cell modem
- The MultiModem Cell modem should have an EDGE capable network and an active SIM card
- The modem must be getting a proper signal and be showing a network registration through the wireless provider's network
- A PC running Windows 7, Vista or XP with the Multi-Tech drivers installed

The following instructions are for Windows 7, Vista and XP. Every PC may have slight differences which may cause the instructions to be different. Use these instructions as a guide to help you understand what is required to set up an Internet connection through your wireless service provider for all operating systems.

## Set the Access Point Name (APN) into the Modem's Properties on your PC

Before your EDGE modem can connect to your provider's network, you must tell the modem the APN that it's going to connect to. The APN is a server name that your account is setup on with your provider. Your provider supplies you with your APN. Some better known APNs include:

- AT&T; PROXY, or INTERNET, or PUBLIC
- T-Mobile: INTERNET2.VOICESTREAM.COM, or INTERNET3.VOICESTREAM.COM, or WAP.VOICESTREAM.COM
- Rogers AT&T of Canada: INTERNET.COM

### Setting up an Access Point Name (APN)

1. From the **Start** button select **Control Panel**.
2. In Control Panel, double-click **Phone and Modem Options**.
3. In the **Phone and Modem Options** window, select the **Modems** tab.
4. From the table, select your Cell modem then click **Properties**.
5. A **Properties** window for your modem opens. For Windows Vista and later operating systems, click on the **Change Settings** button.
6. Select the **Advanced** tab. In the **Extra Settings** group, in the Extra initialization commands text box, enter:  
**AT+CGDCONT=1,"IP", "<APN>"**  
where <APN>, is the APN for your account.  
For example: AT+CGDCONT=1"IP", "ISP.AT&T"
7. Click **OK** to close the Properties window. Then click **OK** to close the Phone and Modems Options window.

## Create Your Dial-Up Connection in Windows Vista and XP

1. From **Start**, select **Control Panel**.
2. In the Control Panel, double-click **Network Connections**.
3. On the Network Connections screen on the left-hand side under **Network Tasks**, click **Create a new connection**.
4. The New Connection Wizard appears. It walks you through setting up your Internet connection. Click **Next**.
5. On the Network Connection Type screen, select **Connect to the Internet**. Click **Next**.
6. On the Getting Ready screen, select **Set up my connection manually**. Click **Next**.
7. On the Internet Connection screen, select **Connect using a dial-up modem**. Click **Next**.

**Note:** After clicking on Next, you may or may not be asked to select which modem to use. If you have more than one modem installed in your PC, you will be required to select the proper modem to use. If asked, please select the Multi-Tech wireless modem that has been installed.

8. On the Connection Name screen in the **ISP Name** box, type in a name for your new connection. Click **Next**.
9. On the Phone Number to Dial screen, type the number that specifies to the modem to connect to your provider's Internet service.

Type in the number **\*99\*\*\*1#**.

Then click **Next>**.

For CDMA modems, type in the number **#777**.

Then click **Next >**.

10. On the Connection Availability screen, specify if this connection is for anyone's use or for your use only by checking the appropriate button. Click **Next**.
11. On the Internet Account Information screen, type the user name and the password for your account. In many cases, a user name and a password are not required, but some wireless providers require it. Check with your provider to see if they are needed.

Check the following two options if you would like them activated:

Check the box if you want this account name and password to be used by everyone.

Check the box if you want this as your default Internet connection. Then click **Next >**.

12. On the Completing the New Connection Wizard screen, decide if you want to add a shortcut to your desktop. Click **Finish**.
13. A Connection screen displays on your desktop. Click **Properties**.
14. The Properties window opens for you to make your connection.  
**Important:** Make sure that Use dialing rules is not selected, and then click **OK**.
15. Once back at your Connection screen, click **Dial** to start the connection.
16. The connection tells the modem to connect to your provider's Internet service. Once connected, you see the connection status icon in your system tray at the bottom right-hand corner of your screen.

You can now open the browser of your preference to surf the Internet.

## Disconnecting

To disconnect the connection:

1. Right click on the connection icon in your system tray.
2. From the menu that appears, select **Disconnect**.

## Generic Dial-Up Method - Non-Windows

1. If CDMA, dial onto the network using **AT#777**
2. If GPRS/EDGE:

- a. To set up an Access Point Name (APN) enter:

`AT+CGDCONT=1, "IP", "<APNSERVER>"`

Where <APNSERVER> is the APN server supplied by your carrier.

- b. Dial onto the network using **AT\*99\*\*\*1#**

## Serial Baud Rate

Your MultiModem Cell is defaulted to a serial baud rate of 115200 from the factory. To enjoy faster baud rates, you can manually set the modem to a higher speed (230400, 460800, or 921600) using the **AT+IPR=<baudspeed>**. However, you must make sure the host serial port is capable of the new speed. If the new speed is set and the host hardware is not capable of the higher speed, you need to find a host that is capable.

---

# Appendix A – Regulatory Compliance

## FCC Part 15 Class B Statement

This equipment has been tested and found to comply with the limits for a **Class B** digital device, pursuant to part 15 of the FCC Rules. These limits are designed to provide reasonable protection against harmful interference in a residential installation. This equipment generates, uses, and can radiate radio frequency energy and, if not installed and used in accordance with the instructions, may cause harmful interference to radio communications. However, there is no guarantee that interference will not occur in a particular installation. If this equipment does cause harmful interference to radio or television reception, which can be determined by turning the equipment off and on, the user is encouraged to try to correct the interference by one or more of the following measures:

- Reorient or relocate the receiving antenna.
- Increase the separation between the equipment and receiver.
- Connect the equipment into an outlet on a circuit different from that to which the receiver is connected.
- Consult the dealer or an experienced radio/TV technician for help.

**Warning:** Changes or modifications to this unit not expressly approved by the party responsible for compliance could void the user's authority to operate the equipment.

## EMC, Safety, and R&TTE Directive Compliance



The CE mark is affixed to this product to confirm compliance with the following European Community Directives:

Council Directive 2004/108/EC of 15 December 2004 on the approximation of the laws of Member States relating to electromagnetic compatibility;

and

Council Directive 2006/95/EC of 12 December 2006 on the harmonization of the laws of Member States relating to electrical equipment designed for use within certain voltage limits;

and

Council Directive 1999/5/EC of 9 March 1999 on radio equipment and telecommunications terminal equipment and the mutual recognition of their conformity.

## International Modem Restrictions

Some dialing and answering defaults and restrictions may vary for international modems. Changing settings may cause a modem to become non-compliant with national regulatory requirements in specific countries. Also note that some software packages may have features or lack restrictions that may cause the modem to become non-compliant.

## EMC Requirements for Industry Canada

This Class B digital apparatus meets all requirements of the Canadian Interference-Causing Equipment Regulations.

Cet appareil numérique de la classe B respecte toutes les exigences du Règlement Canadien sur le matériel brouilleur.

This device complies with Industry Canada RSS Appliance radio exempt from licensing. The operation is permitted for the following two conditions:

1. the device may not cause harmful interference, and
2. the user of the device must accept any interference suffered, even if the interference is likely to jeopardize the operation.

Le présent appareil est conforme aux CNR d'Industrie Canada applicables aux appareils radio exempts de licence. L'exploitation est autorisée aux deux conditions suivantes:

1. l'appareil ne doit pas produire de brouillage, et
2. l'utilisateur de l'appareil doit accepter tout brouillage radioélectrique subi, même si le brouillage est susceptible d'en compromettre le fonctionnement.

## Waste Electrical and Electronic Equipment Statement

### WEEE Directive

The WEEE Directive places an obligation on EU-based manufacturers, distributors, retailers, and importers to take-back electronics products at the end of their useful life. A sister directive, ROHS (Restriction of Hazardous Substances) complements the WEEE Directive by banning the presence of specific hazardous substances in the products at the design phase. The WEEE Directive covers all Multi-Tech products imported into the EU as of August 13, 2005. EU-based manufacturers, distributors, retailers and importers are obliged to finance the costs of recovery from municipal collection points, reuse, and recycling of specified percentages per the WEEE requirements.

### Instructions for Disposal of WEEE by Users in the European Union

The symbol shown below is on the product or on its packaging, which indicates that this product must not be disposed of with other waste. Instead, it is the user's responsibility to dispose of their waste equipment by handing it over to a designated collection point for the recycling of waste electrical and electronic equipment. The separate collection and recycling of your waste equipment at the time of disposal will help to conserve natural resources and ensure that it is recycled in a manner that protects human health and the environment. For more information about where you can drop off your waste equipment for recycling, please contact your local city office, your household waste disposal service or where you purchased the product.

July, 2005





## REACH Statement

### Registration of Substances:

After careful review of the legislation and specifically the definition of an “article” as defined in EC Regulation 1907/2006, Title II, Chapter 1, Article 7.1(a)(b), it is our current view Multi-Tech Systems, Inc. products would be considered as “articles”. In light of the definition in § 7.1(b) which requires registration of an article only if it contains a regulated substance that “is intended to be released under normal or reasonable foreseeable conditions of use,” our analysis is that Multi-Tech Systems, Inc. products constitute nonregisterable articles for their intended and anticipated use.

### Substances of Very High Concern (SVHC)

Per the candidate list of Substances of Very high Concern (SVHC) published October 28, 2008 we have reviewed these substances and certify the Multi-Tech Systems, Inc. products are compliant per the EU “REACH” requirements of less than 0.1% (w/w) for each substance. If new SVHC candidates are published by the European Chemicals Agency, and relevant substances have been confirmed, that exceeds greater than 0.1% (w/w), Multi-Tech Systems, Inc. will provide updated compliance status.

Multi-Tech Systems, Inc. also declares it has been duly diligent in ensuring that the products supplied are compliant through a formalized process which includes collection and validation of materials declarations and selective materials analysis where appropriate. This data is controlled as a part of a formal quality system and will be made available upon request.

## Restriction of the Use of Hazardous Substances (RoHS)



### Multi-Tech Systems, Inc. Certificate of Compliance 2011/65/EU

Multi-Tech Systems confirms that its embedded products comply with the chemical concentration limitations set forth in the directive 2011/65/EU of the European Parliament (Restriction of the use of certain Hazardous Substances in electrical and electronic equipment - RoHS)

These Multi-Tech products do not contain the following banned chemicals<sup>1</sup>:

- Lead, [Pb] < 1000 PPM
- Mercury, [Hg] < 1000 PPM
- Hexavalent Chromium, [Cr+6] < 1000 PPM
- Cadmium, [Cd] < 100 PPM
- Polybrominated Biphenyl, [PBB] < 1000 PPM
- Polybrominated Diphenyl Ether, [PBDE] < 1000 PPM

### Environmental considerations:

- Moisture Sensitivity Level (MSL) =1  
Maximum Soldering temperature = 260C (in SMT reflow oven)

<sup>1</sup>Lead usage in some components is exempted by the following RoHS annex, therefore higher lead concentration would be found in some modules (>1000 PPM);

–Resistors containing lead in a glass or ceramic matrix compound.

## Information on HS/TS Substances According to Chinese Standards

In accordance with China's Administrative Measures on the Control of Pollution Caused by Electronic Information Products (EIP) # 39, also known as China RoHS, the following information is provided regarding the names and concentration levels of Toxic Substances (TS) or Hazardous Substances (HS) which may be contained in Multi-Tech Systems Inc. products relative to the EIP standards set by China's Ministry of Information Industry (MII).

Name of the Component	Hazardous/Toxic Substance/Elements					
	Lead (PB)	Mercury (Hg)	Cadmium (CD)	Hexavalent Chromium (CR6+)	Polybrominated Biphenyl (PBB)	Polybrominated Diphenyl Ether (PBDE)
Printed Circuit Boards	O	O	O	O	O	O
Resistors	X	O	O	O	O	O
Capacitors	X	O	O	O	O	O
Ferrite Beads	O	O	O	O	O	O
Relays/Opticals	O	O	O	O	O	O
ICs	O	O	O	O	O	O
Diodes/ Transistors	O	O	O	O	O	O
Oscillators and Crystals	X	O	O	O	O	O
Regulator	O	O	O	O	O	O
Voltage Sensor	O	O	O	O	O	O
Transformer	O	O	O	O	O	O
Speaker	O	O	O	O	O	O
Connectors	O	O	O	O	O	O
LEDs	O	O	O	O	O	O
Screws, Nuts, and other Hardware	X	O	O	O	O	O
AC-DC Power Supplies	O	O	O	O	O	O
Software / Documentation CDs	O	O	O	O	O	O
Booklets and Paperwork	O	O	O	O	O	O
Chassis	O	O	O	O	O	O

- X** Represents that the concentration of such hazardous/toxic substance in all the units of homogeneous material of such component is higher than the SJ/Txxx-2006 Requirements for Concentration Limits.
- O** Represents that no such substances are used or that the concentration is within the aforementioned limits.

## Information on HS/TS Substances According to Chinese Standards (in Chinese)

### 依照中国标准的有毒有害物质信息

根据中华人民共和国信息产业部 (MII) 制定的电子信息产品 (EIP) 标准—中华人民共和国《电子信息产品污染控制管理办法》(第 39 号), 也称作中国 RoHS, 下表列出了 Multi-Tech Systems, Inc. 产品中可能含有的有毒物质 (TS) 或有害物质 (HS) 的名称及含量水平方面的信息。

成分名称	有害/有毒物质/元素					
	铅 (PB)	汞 (Hg)	镉 (CD)	六价铬 (CR6+)	多溴联苯 (PBB)	多溴二苯醚 (PBDE)
印刷电路板	O	O	O	O	O	O
电阻器	X	O	O	O	O	O
电容器	X	O	O	O	O	O
铁氧体磁环	O	O	O	O	O	O
继电器/光学部件	O	O	O	O	O	O
IC	O	O	O	O	O	O
二极管/晶体管	O	O	O	O	O	O
振荡器和晶振	X	O	O	O	O	O
调节器	O	O	O	O	O	O
电压传感器	O	O	O	O	O	O
变压器	O	O	O	O	O	O
扬声器	O	O	O	O	O	O
连接器	O	O	O	O	O	O
LED	O	O	O	O	O	O
螺丝、螺母以及其它五金件	X	O	O	O	O	O
交流-直流电源	O	O	O	O	O	O
软件/文档 CD	O	O	O	O	O	O
手册和纸页	O	O	O	O	O	O
底盘	O	O	O	O	O	O

**X** 表示所有使用类似材料的设备中有害/有毒物质的含量水平高于 SJ/Txxx-2006 限量要求。

**O** 表示不含该物质或者该物质的含量水平在上述限量要求之内。

# Appendix B - Cellular Information

## Antenna System for Cellular Devices

The cellular/wireless performance is completely dependent on the implementation and antenna design. The integration of the antenna system into the product is a critical part of the design process; therefore, it is essential to consider it early so the performance is not compromised. If changes are made to the certified antenna system of the MultiModem, then recertification is required by specific network carriers such as Sprint. The Antenna System is defined as the UFL connection point from the MultiModem to the specified cable specifications and specified antenna specifications.

## FCC Requirements for the Antenna

The antenna gain, including cable loss, for the radio you are incorporating into your product design must not exceed the requirements at 850 MHz and 1900 MHz as specified by the FCC grant for mobile operations and fixed mounted operations as defined in 2.1091 and 1.1307 of the FCC rules for satisfying RF exposure compliance. The antenna used for transmitting must be installed to provide a separation distance of at least 20cm from all persons and must not transmit simultaneously with any other antenna transmitters. User and installers must be provided with antenna installation instructions and transmitter operating conditions to satisfying RF exposure compliance.

## Antenna Specifications

### CDMA RF Specifications

	CDMA 800	CDMA 1900
Frequency RX	869 to 894 MHz	1930 to 1990 MHz
Frequency TX	824 to 849 MHz	1850 to 1910 MHz

### CDMA Antenna Requirements/Specifications

Frequency Range	824 – 894 MHz / 1850 – 1990 MHz
Impedance	50 Ohms
VSWR	VSWR shall not exceed 2.0:1 at any point across the bands of operation
Typical Radiated Gain	3 dBi on azimuth plane
Radiation	Omni-directional
Polarization	Vertical
Antenna Loss	Free space not to exceed -3dB
TRP/TIS	The total radiated power (TRP) at the antenna shall be no less than +21/20 dBm for PCS/Cell channels respectively, and the total isotropic sensitivity (TIS) at the antenna shall be no less than -104/104 dBm for PCS/Cell channels respectively.

## GSM/EGSM RF Specifications

	GSM 850	EGSM 900	GSM 1800	GSM 1900
Frequency RX	869 to 894 MHz	925 to 960 MHz	1805 to 1880 MHz	1930 to 1990 MHz
Frequency TX	824 to 849 MHz	880 to 915 MHz	1710 to 1785 MHz	1850 to 1910 MHz

## GSM Antenna Requirements/Specifications

Frequency Range	824 – 960 MHz / 1710 – 1990 MHz
Impedance	50 Ohms
VSWR	VSWR shall not exceed 2.0:1 at any point across the bands of operation
Typical Radiated Gain	3 dBi on azimuth plane
Radiation	Omni-directional
Polarization	Vertical
Antenna Loss	Free space not to exceed -3db
TRP/TIS	Including cable loss the total radiate power (TRP) at the antenna shall be no less than +22/24.5 dBm for 850/1900 MHz respectively, and the total isotropic sensitivity (TIS) at the antenna shall be no less than -99/101.5 dBm for 850/1900 MHz respectively.

## PTCRB Requirements for the Antenna

There cannot be any alteration to the authorized antenna system. The antenna system must maintain the same specifications. The antenna must be the same type, with similar in-band and out-of-band radiation patterns.

## Antennas Available from Multi-Tech Systems, Inc.

Part Number	Description	Quantity
<b>Quad Band</b>		
ANQB-1HRA	Hinged Right Angle 800/900/1800/1900 MHz Cellular Antenna, 7.5"	1
ANQB-10HRA	Hinged Right Angle 800/900/1800/1900 MHz Cellular Antenna, 7.5"	10
ANQB-50HRA	Hinged Right Angle 800/900/1800/1900 MHz Cellular Antenna, 7.5"	50
<b>Dual Band</b>		
ANF1-1HRA	Hinged Right Angle 900/1800 MHz Cellular Antenna, 4"	1
ANF1-10HRA	Hinged Right Angle 900/1800 MHz Cellular Antenna, 4"	10
ANF1-50HRA	Hinged Right Angle 900/1800 MHz Cellular Antenna, 4"	50
ANCF2-1HRA	Hinged Right Angle 800/1900 MHz Cellular Antenna, 4"	1
ANCF2-10HRA	Hinged Right Angle 800/1900 MHz Cellular Antenna, 4"	10
ANCF2-50HRA	Hinged Right Angle 800/1900 MHz Cellular Antenna, 4"	50
<b>Mag Mount Dual Band</b>		
ANF1-1MMHW	Mag Mount 900/1800 MHz 1/2 Wave Cellular Antenna, 12.5"	1
ANF1-10MMHW	Mag Mount 900/1800 MHz 1/2 Wave Cellular Antenna, 12.5"	10
ANF1-50MMHW	Mag Mount 900/1800 MHz 1/2 Wave Cellular Antenna, 12.5"	50
ANF1-1MMQW	Mag Mount 900/1800 MHz 1/4 Wave Cellular Antenna, 4"	1
ANF1-10MMQW	Mag Mount 900/1800 MHz 1/4 Wave Cellular Antenna, 4"	10
ANF1-50MMQW	Mag Mount 900/1800 MHz 1/4 Wave Cellular Antenna, 4"	50
ANCF2-1MMHW	Mag Mount 850/1900 MHz 1/2 Wave Cellular Antenna, 12.5"	1
ANCF2-10MMHW	Mag Mount 850/1900 MHz 1/2 Wave Cellular Antenna, 12.5"	10
ANCF2-50MMHW	Mag Mount 850/1900 MHz 1/2 Wave Cellular Antenna, 12.5"	50
ANCF2-1MMQW	Mag Mount 850/1900 MHz 1/4 Wave Cellular Antenna, 4"	1
ANCF2-10MMQW	Mag Mount 850/1900 MHz 1/4 Wave Cellular Antenna, 4"	10
ANCF2-50MMQW	Mag Mount 850/1900 MHz 1/4 Wave Cellular Antenna, 4"	50

## Appendix C – DC Power Cable

### DC Power Cable Dimensions

